

AIR COOLED CHILLER UNIT

RENTAL UNIT

100 Ton Air Cooled Chiller



**HOLT Industrial
Rentals**



For a free site assessment,
call **844.660.7368**

HoltIndustrialRentals.com

Power • Compressed Air • Climate Control

SPECIFICATIONS:

Model..... 100 Ton Air Cooled Chiller

Dimensions

Length..... 13'4"

Width 8'

Height 8'5"

Weight..... 8,280 lbs.

APPLICATIONS:

- Alkylation (Alky) Cooling
- Wet Gas Compressor Cooling
- Concrete Cooling
- Dense Air Injection
- Environmental Control
- Plastic Production Processes
- Turbine Inlet Cooling
- Waste Water Treatment

TECHNICAL DATA

EVAPORATOR DATA

EWT (°F)	54.0
LWT (°F)	44.0
Design Flow Rate (gpm)	238.8
Pressure Drop (ft.)	10.3
Fluid	Water
Water Volume (gal.)	58.9

CONDENSER DATA

Ambient Temp. (°F)	95.0
--------------------	------

ELECTRICAL DATA

Volts/Ph/Hz	460/3/60
Min. Circuit Ampacity	203.0 FLA (Chiller) 21 FLA (Pump)
Min. Dual Element Fuse Size (Amps)	250

MIN/MAX FLOW GPM

Min Flow	100
Max Flow	400

COMPRESSOR TYPE:

5 Scroll

GENERAL

Capacity	99.6 Tons
Refrigerant	R410A
Chilled Water/Brine Temperature Range	30°F–65°F

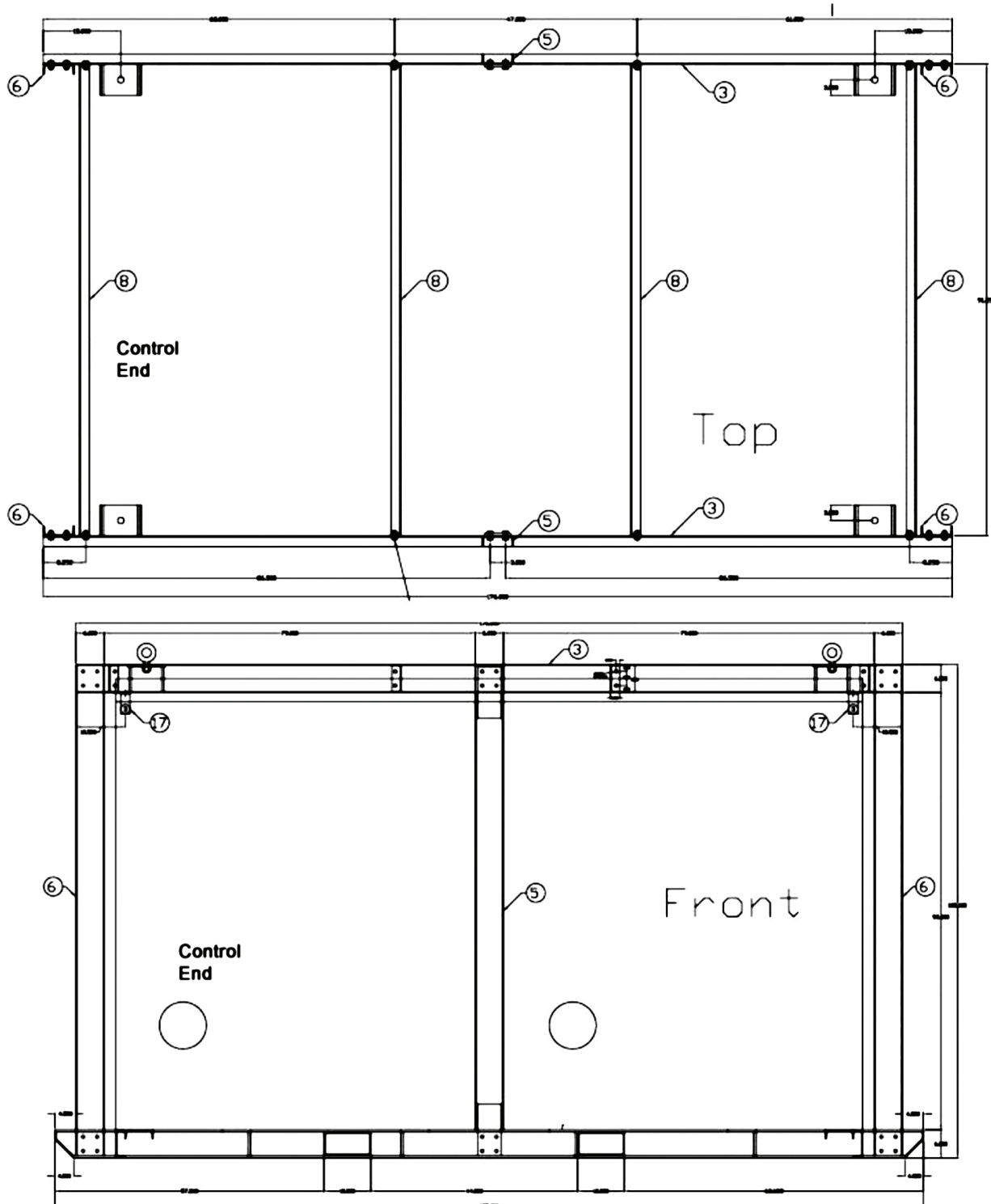
Consult your HOLT Industrial Rentals representative for more details.

© 2023 HOLT Industrial Rentals. All rights reserved. Materials and specifications are subject to change without notice.

AIR COOLED CHILLER UNIT

RENTAL UNIT 100 Ton Air Cooled Chiller

**HOLT Industrial
Rentals**



For a free site assessment, call 844.660.7368

Consult your HOLT Industrial Rentals representative for more details.

© 2023 HOLT Industrial Rentals. All rights reserved. Materials and specifications are subject to change without notice.